

MLB 100x100 COUNTER

TECHNICAL SHEET



PRODUCT DESCRIPTION

The Mobile Light Box system powered by SEGO seamlessly integrates cutting-edge technology with user-friendly design. Boasting a toolless assembly down to its foundation, Mobile Light Box is crafted to enhance your display experience. Magnetic electrical connectors illuminate the pre-installed UL certified LED lights within the profiles, ensuring a sleek appearance with concealed wires. The aluminum frame supports edge-to-edge customizable SEG backlit fabric graphics on both the front and back. Beyond its visual appeal, Mobile Light Box is portable, modular, and highly coveted, setting it apart from other lightboxes. Every detail has been meticulously considered, right down to the durable foam-cut carry bag, which is uniquely designed to safeguard and organize all components.

DISPLAY DIMENSIONS MLB 100 x 100 cm (39.37" x 39.37")

DISPLAY CONSTRUCTION

Aluminum extrusion frame with plastic components

GRAPHIC MATERIAL

Dye Sub Backlit Fabric

GRAPHIC FINISHING

Silicone beading sewn onto edge of graphic

SHIPPING WEIGHTS & DIMENSIONS

MLB 100 x 100 COUNTER 49 x 14 x 8 34.0 lbs.

LED LIGHT SPECIFICATION

BRAND	Osram
POWER	3W
CCT (COLOR TEMP)	6800k
AVERAGE BEAM ANGEL	20 °
LM/W	130
AVG LM/M ²	4800-5800
VOLTAGE INPUT	24V

LUMENS

VOLTAGE (V)	24
POWER (W)	42
LM/W	130
TOTAL LM	5460
AVG LM	5850
CU	.8
EAV	4680

TRANSFORMER SPECIFICATION

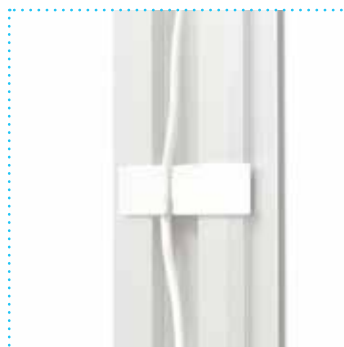
POWER RATE	60W (1 pcs)
TRANSFORMER	
CERTIFICATES	UL, CE, GEM
VOLTAGE INPUT	100-240V
VOLTAGE OUTPUT	24V



TOOL FREE CONNECTION



MAGNETIC WIRE CONNECTION



CLEAN CABLE MANAGEMENT



TOOL FREE FOOT CONNECTION

PARTS LIST



Horizontal Profile B x1



Horizontal Profile T x1



Vertical Profile x2



Counter Top x1



Foot x2



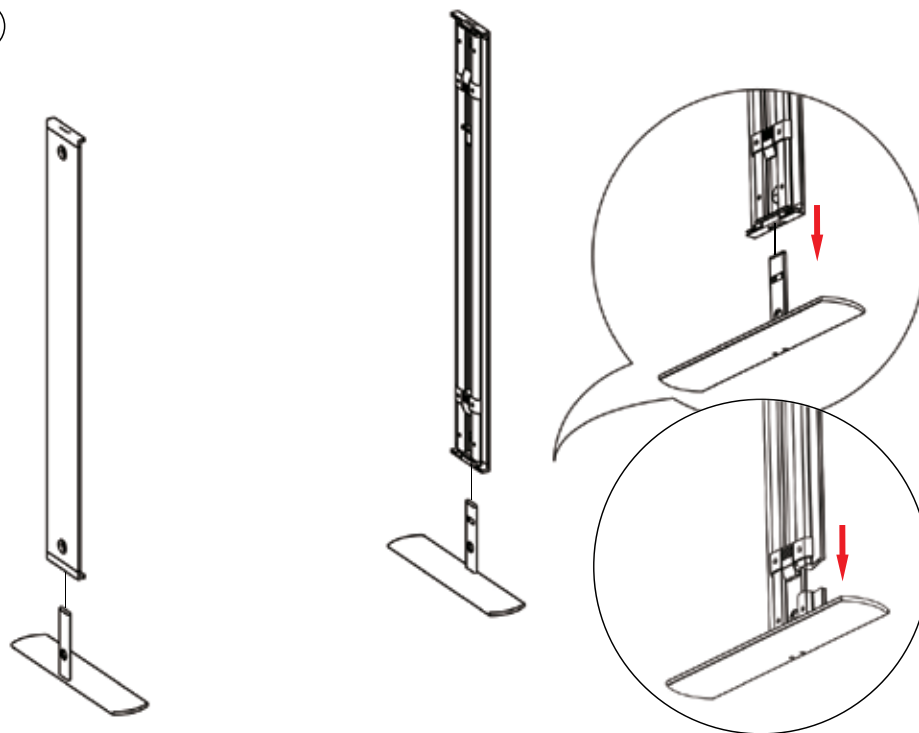
S- Cable x1



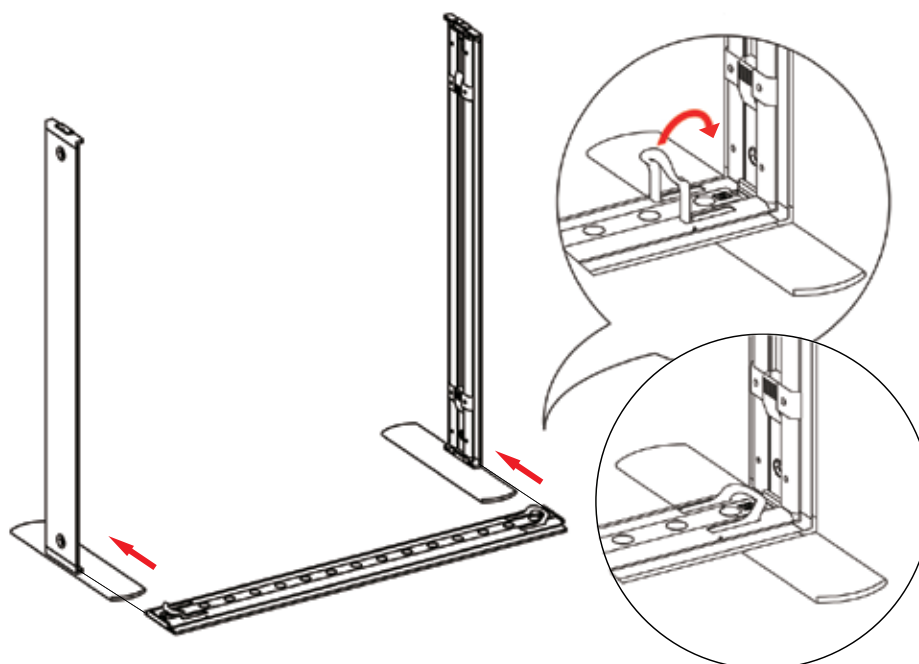
Transformer x1

SET UP INSTRUCTIONS

①

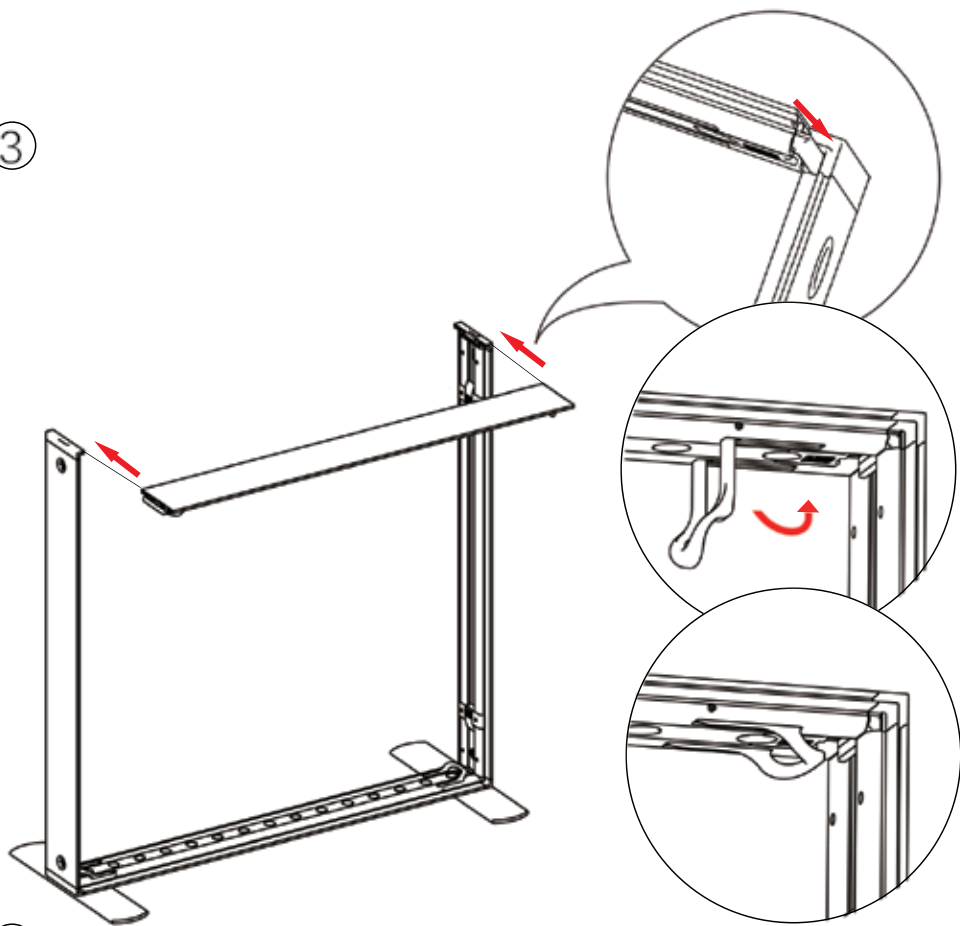


②

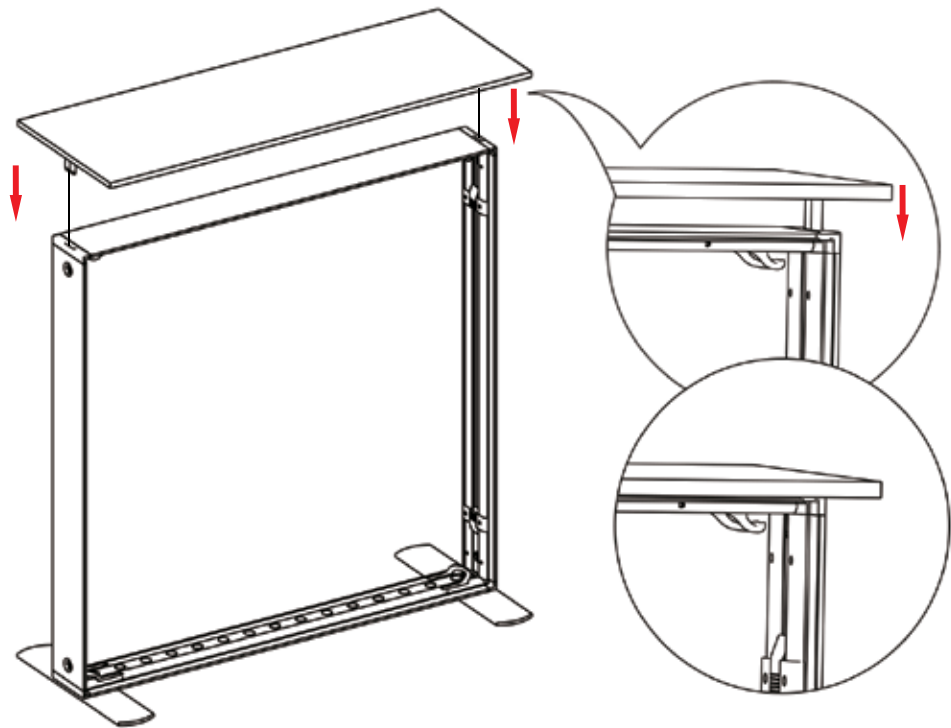


MLB 100x100 COUNTER
TECHNICAL SHEET

③



④



⑤

